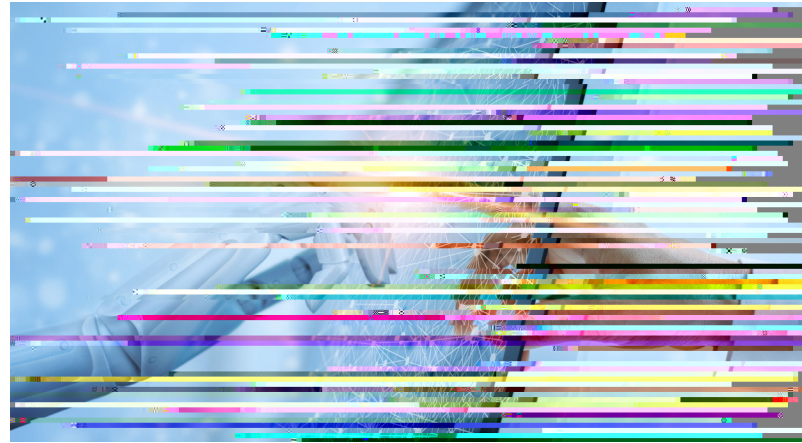


Modernizing Construction Performance With Intelligent Platforms

Written by: Karthik Venkatasubramanian, Global Vice President, Data Strategy and Development, Oracle Construction and Engineering



Getting Off to The Right Start

A major key to creating and rolling out a successful data strategy is to carefully consider needs, and the steps needed to achieve them. Generally speaking, , execute the plan

Demystifying Predictive AI

Many engineering and construction businesses are hesitant to invest in AI because they assume it requires a lot of infrastructure and manual entry of large amounts of historical data, but that is not always the case. In fact, some newer data

platforms have algorithms that are pretrained as a starting point, and can provide predictive insights from whatever historical data the organization inputs.

The fact is, implementing predictive AI is not as daunting as organizations might think, thanks to advanced platforms that can be deployed quickly and tailored to an individual organization's needs. Organizations can take advantage of these solutions to quickly start generating useful insights into performance and risks.

Pot

About the Author
