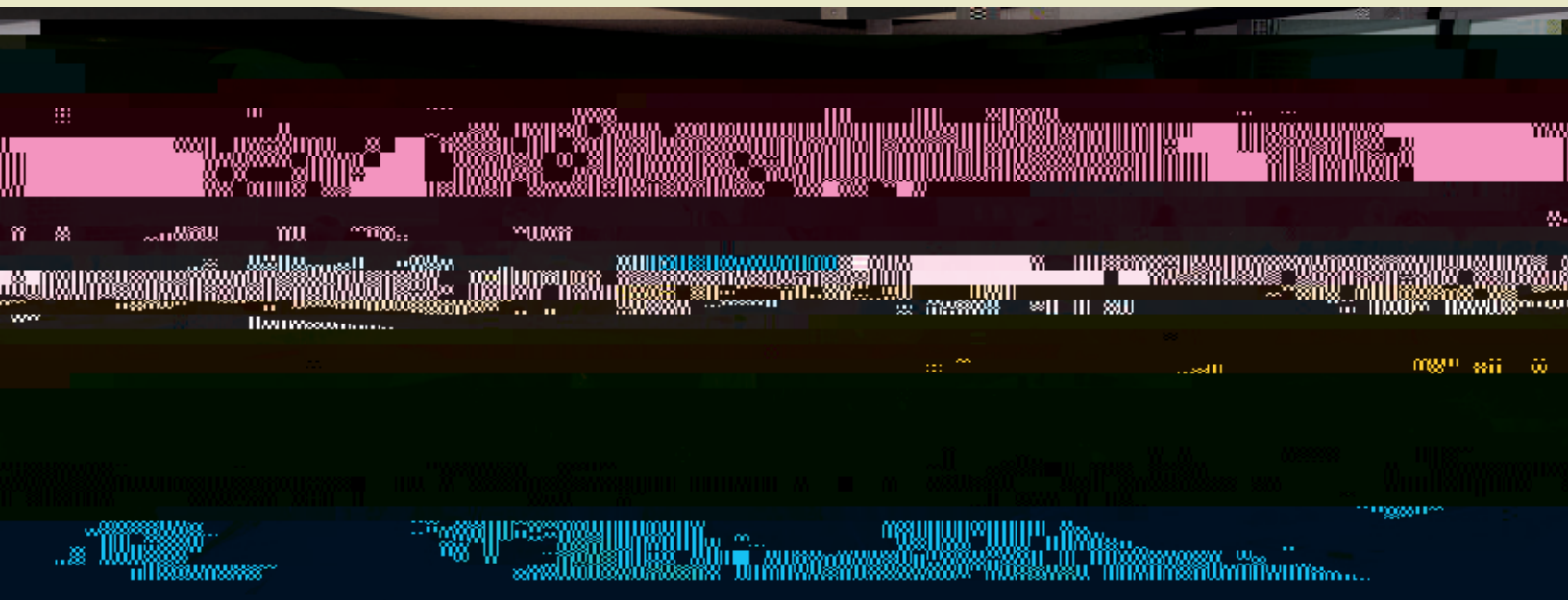




FutureFocus 2012+





A 0 6 0 M 0 0

T 0 0 0 0 0 0 0 0 0 0

I 0 0 0 0 ,CM 0 0 0 0 0 0

S 0 0 :

» F 0 0 0 0

» E 0 0 0 0 0 0

» M 0 0 0 0 0 0

» F 0 0

» I 0 0

» M 0 0 0 0 BIM

4D/5D 0 ,GPS, 0 0 0 0

0 0 0 0 0 0 0 0 0 0

.ME 2 3 0 3 (BIM) 3 0 0 0



T o

o

o

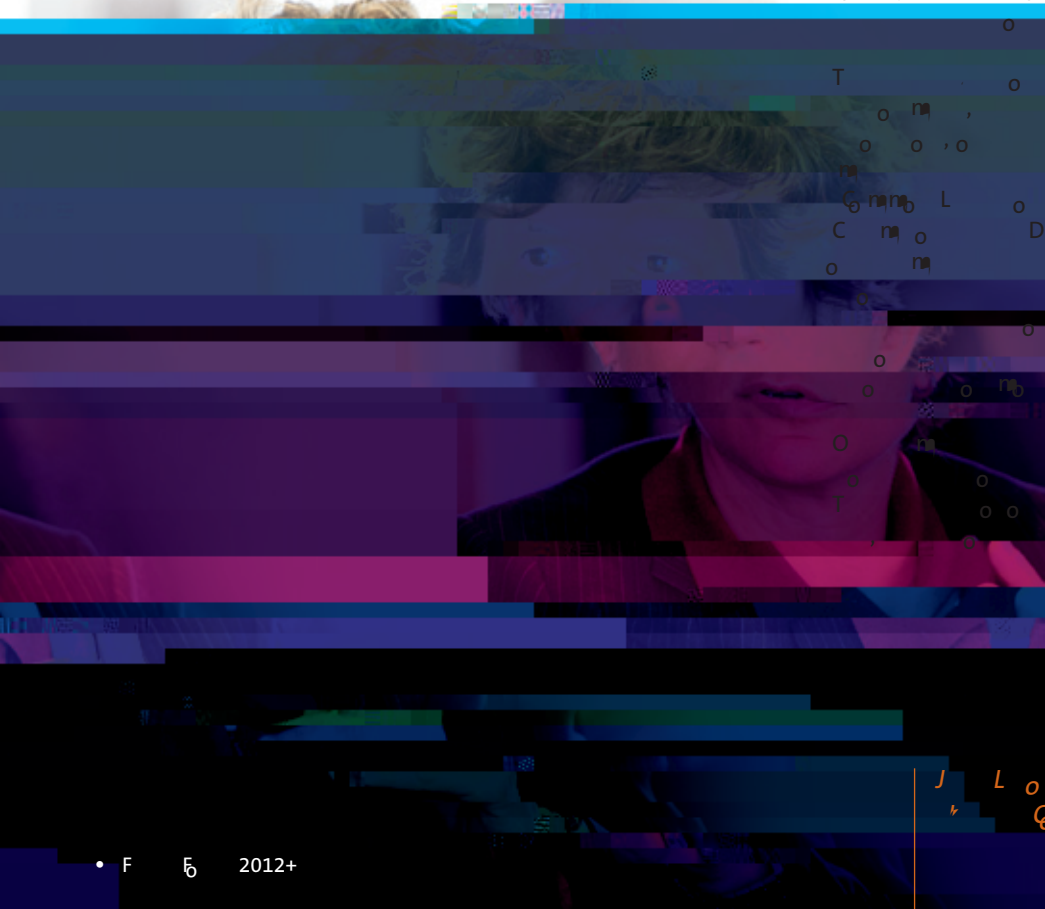
o

P o o CM. I o o
o ?" . T o , o m o
o o o o o o o o o o
o o o o o o o o o o
o o o o o o o o o o
T o o m o o o , o m
o o o "P o o . O o o o
I , o o o o o o o o m .
o m ? N o o o o o o o
T



I
 ID) GPS RFID (CM /PM
 A
 A
 A
 CM
 T
 O

CM, CM
 BIM
 > f^%...f
 M
 G .S
 F
 S A ,A
 20,30, 40
 .A
 .T



R
 M
 T
 .P
 .T
 CM
 CM

I n b - o o o o o
o o o .T o o o o
o o m o o o o ,
o o o o o .
I. o F B o L o S o m
o o o o o o o - m
o .T m o o o (o
1964 2003) m o o o ,

- ¢ % £ ₤

A o o o o m " o o o
CM o o o , o o

J L o m o m o o o F E
R , m o o
G , o o m o o P o . T
m o o m o o - o o o o
o o
o . l o o o CM/PM
o m , o o o "

E m , L o , o o
o o o o o o m
5o 10 o m m o m
m m o A o o

L o o o G
R B o P o , o o B l o .
T o o o o m o o o o o
o o o m " o o o o o
T o o o o o

I o o o o " R . o o
o o m o m o o o o
o m o o o . A , o o o ,
o m o o o ? "

I m o o o o o , o
o o o o o . R
m . T





•œ' - ¥ •Š %••
 Š œ -- £ -œ• -£%•

A A o C o , A o o o
 C o B o , o 460 o o o o ,
 S O B , C o o C ,
 L o G B , %S.S m
 G B , T oo M F
 J B , o

A o o
 m S m M m .H
 %S.A G 6510 C E
 S o m m o
 Ann o o d , d o o
 1991.A d
 A o C o 1997
 o S O B
 A o o m o , m A
 A o C o F 2007
 A o C o M 2010.

A C o ,
 LEED A P o o .H m m
 o Ann I o A ,
 N o T o H o P o ,
 G o I o I o , o
 B G , G o M
 A o o o Ann .

• Š!• • • •

C m S G o E
 o D m o T o o ,
 DOT m
 m , 127,000.T D m
 24 m o o
 \$95M.T
 D m o d P o o E ,
 \$1.9B.H P o o E ,
 C G o M .

C m .H o o o
 o d .H o o o o
 H m o o o o .
 o o m o o o o G
 G o o o o o o o
 o o o o o o o
 o o o o .H o 15
 o o o o o o o
 o o o o o o o
 o o o o o o o
 o o o o o o o
 H o o C E
 o m k o S A m
 M o P A m o m
 O D m k .H o 2011
 o G o M m A o o
 o Ann .D O A .

€ %••• • ^ c+•%•%•Š '•

B G A G m m o o P o d
 D O o D G o ,
 P B S , S G
 S A m o .

I o o , GSA m \$1 o
 o o o o m ,
 o o o o o o o
 o o o o o o o
 o d o o o .G
 R o R o P o m M m
 R o E , GSA o o
 Ann R o R m A o 2009.
 I o o , M.G m m
 o d o m o m
 o m \$5.5 o
 %S. o o m
 d m -
 k S .

H o m C o BA A
 o m k o C o B
 MBA o m G o G k
 S F o .

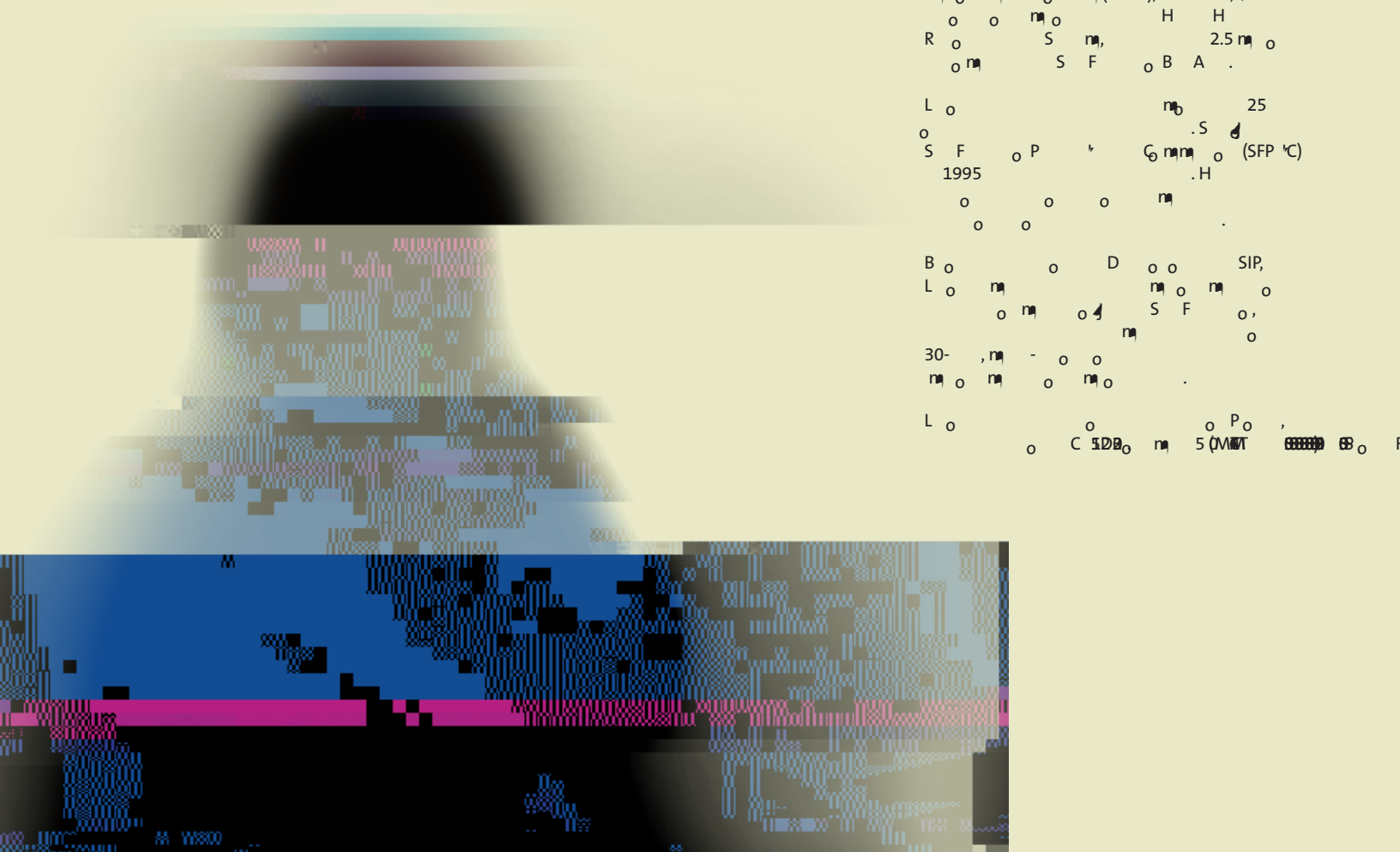
^ %•• • %†£'•-

J L o o D o o S m
 In o m P o m (SIP), 10- , \$4.6
 o o m o H H
 R o S m , 2.5 m o
 o m S F o B A .

L o m 25
 o .S d
 S F o P k G m m o (SFP %C)
 1995 .H
 o o o m
 o o

B o o D o o SIP,
 L o m m o m o
 o m o d S F o ,
 m o
 30- , m - o o
 m o m o m o .

L o o o P o ,
 o C 5DB o m 5 (MMT 6666) 66 o F



Št+Š- Š-£

B P o o o F o ,
 o o o o o .H
 &l o o o o o
 o o o o o
 P o o o o o
 o o o o o
 o o o o o
 .H o o o P o o
 M o o o CMAA, o o
 S P o o M o o Mb
 375 o o .H
 o o o N o A o o
 H o o o t.S.
 o o o A P E o o
 G o o (APEC) B A o G
 (ABAC), o o t.S. A -P
 o o o o o
 P o o o o
 20- o o
 A C o P o B o (PB) o o
 o o o o o

A A ,R o o
 M o o N S o M o CM o
 N o ,MARTA P o A S
 S S B F o .

•%£ Š•Š £ œ •

M o R o o
 o S o .

œŠ -£ œ•Š Š••,œ •

C R
 o o o P o B o
 G o S ,l o o PB
 G o l .H o o o
 o o o o o o
 H F o o G o M o
 A o o o Ann (CMAA), o
 A o o o B o D o o
 o o o o CMAA o
 B o .H F o o ASCE.
 H o o B o G o o
 ASCE G o l o o
 M o P o o o o
 R o o o o
 DCACE o o o ACE
 N o B o .H o o o
 NGO B o P o o

F +B

The CMAA Foundation

The CMAA Foundation was established in 2001 to support the CMAA profession and to provide a source of funding for the CMAA Foundation. The CMAA Foundation is a 501(c)(3) non-profit organization that is dedicated to the advancement of the CMAA profession and to the development of the CMAA profession. The CMAA Foundation is a 501(c)(3) non-profit organization that is dedicated to the advancement of the CMAA profession and to the development of the CMAA profession.

The CMAA Foundation is a 501(c)(3) non-profit organization that is dedicated to the advancement of the CMAA profession and to the development of the CMAA profession. The CMAA Foundation is a 501(c)(3) non-profit organization that is dedicated to the advancement of the CMAA profession and to the development of the CMAA profession.

The CMAA Foundation is a 501(c)(3) non-profit organization that is dedicated to the advancement of the CMAA profession and to the development of the CMAA profession. The CMAA Foundation is a 501(c)(3) non-profit organization that is dedicated to the advancement of the CMAA profession and to the development of the CMAA profession.